

DOCTOR OF MEDICINE (MD) DEGREE

5-YEAR PATHWAY





CONSENTS

DOCTOR OF MEDICINE (MD) DEGREE

Welcome.....	4
Why choose the pathway.....	6
St. George's University at-a-glance	7
Ramaiah Group of Institutions at-a-glance	7
The academic pathway	9
Preclinical Certificate Program in India	10
Years 1 and 2: Basic Sciences in Grenada or the UK.....	12
Years 3 and 4: Clinical Sciences in the US or UK.....	14
Destination hospitals	17
Doctor of Medicine (MD) degree & accreditation	19
Ramaiah, Bengaluru	21
St. George's University, Grenada	23
About Grenada	25
Tuition fees & scholarships	26
How to apply	28

WELCOME



“Despite the fact that the world in general, and India in particular, is becoming more individualistic, it is our mission to continue promoting the ‘inclusive excellence’, which reflects our commitment to the vision of our founder, Dr M.S. Ramaiah. With this in mind, our Medical College was established in 1979, and now ranks amongst the best 20 Medical Colleges in India. We are proud of the fact that our Medical College has received a Gold ranking by the QS World Rankings, and is recognized and accredited by the Medical Council of India (MCI).

We believe that the true potential of the new generation of medical aspirants can only be realized by training them in the skills that make them employable, in India and internationally. While relentlessly driving healthcare innovation in India, we have been actively partnering up with distinguished universities, to ensure that we offer an internationally competitive education. Our association with St. George’s University was the logical next step for us, and enables medical aspirants to pursue a top-quality international medical education degree pathway that is fueled by the spirit of investigation, discovery, and intellectual exchange. We look forward to seeing the next generation of Indian doctors graduating from this program, and contributing to the advancement of healthcare in the US, India, and other countries.”

Dr Naresh Shetty, MS
President, International Program &
Strategic Alliance, Ramaiah
Memorial Hospital



“The world is facing a primary care physician shortage – from the largest hospitals in London, New York, and Delhi, to community clinics in rural Kenya. St George’s University founded its world-class School of Medicine in 1976, established to be a top center of international medical education, drawing students and faculty from 140 countries to study medicine in Grenada, and practice medicine in more than 50 different countries around the world. Today, the University’s more than 20,000 graduates include physicians, veterinarians, scientists, and public health and business professionals across the world.

Our highest purpose is education and there is no better education than one that is truly international. The University is affiliated with educational institutions worldwide, including in the United States and the UK, and we are delighted to have found a great association with Ramaiah Group of Institutions in India. With Ramaiah University of Applied Sciences’ outstanding track record for innovation and great University ranking in India, we are delighted to be associated with this distinguished institution to offer medical students in India a truly international medical degree pathway, which offers a strong opportunity for practicing medicine in the US, UK, or India.”

Dr. G. Richard Olds, MD, MACP
President, St. George’s University

WHY CHOOSE THE PATHWAY?

Ramaiah Group of Institutions and St. George's University are working together to enable aspirants from India and around the world to obtain an internationally recognized degree and practice medicine in the US, UK, or India. St. George's University (SGU) is the largest international provider of physicians to the US healthcare system. Over 70 hospitals and health systems in three countries offer clinical and ambulatory training to SGU students in the US and UK, and SGU has over 40 years of experience in supporting international medical students.

In the US, international students represent 1% of all medical school students. The offered program is a perfect solution for Indian students who dream of becoming a US doctor. This pathway provides an opportunity for Indian students to enroll in a US style medical education, while offering a well-established pathway to become a licensed doctor in the US. Moreover, the pathway allows students to gain prestigious qualifications on completing different stages of the pathway, issued by distinguished institutions.

#1
international provider

of physicians practicing in the US—more than any other non-US medical school in the world.¹

Please note that the program offered is not a twinning program and that the successful completion of the program does not confer a joint degree. Ramaiah University is not acting as an agent/ franchisee of St. George's University, Grenada.

SGU, Grenada is not an offshore campus of Ramaiah University or vice-versa.

¹According to US Medical Regulatory Trends and Actions 2018 as published by the Federation of State Medical Boards.

ST. GEORGE'S UNIVERSITY SCHOOL OF MEDICINE



- Recognized by the Medical Council of India (MCI)
- 96% first time pass rate for all SGU students on the USMLE Step 1 in 2018¹
- 91% of eligible international 2019 graduates who applied for a US postgraduate position obtained one at the time of graduation²
- SGU MD graduates have practiced in all 50 states in the US
- #1 largest international provider of physicians licensed in the US³
- #2 largest source of doctors for the entire physician workforce in the US⁴
- 17,000 MD graduates around the world and have practiced in 50+ countries
- Currently, 76% US citizens and 24% non-US citizens in our MD program
- 7% of Indian students amongst our non-US students in our MD program
- Recognized by NACADA⁵ for our Academic Enhancement Program
- A unique and unparalleled system of innovative student support
- 40+ years of academic excellence in international medical education

RAMAIAH GROUP OF INSTITUTIONS



- Ramaiah Medical College established in 1979
- Ranked amongst the top 20 Medical Colleges in India
- Ramaiah University of Applied Sciences is a top research and innovation-oriented academic institution established in 2013
- Ramaiah International Medical School established in 2006
- Ramaiah Clinical Research Centre established in 2012
- Recognized and accredited by the Medical Council of India (MCI)
- 1,650 patient beds x 4 hospitals on the Ramaiah campus
- Over 125 partnerships and more than 100 research tie-ups
- 25 educational and healthcare institutions in Bengaluru
- Ramaiah Medical College Hospital – one of the top 5 hospitals in Bengaluru
- Campus only 7.6km from the city centre, and only 31km from the airport

¹www.usmle.org/performance-data ²Data as of Sept 2019; includes non-US/permanent residents.

³According to an article in the Journal of Medical Regulation, A Census of Actively Licensed Physicians in the United States, 2016, Vol. 103, No 2

⁴According to a 2019 article in the Journal of Medical Regulation, FSMB Census of Licensed Physicians in the United States, 2018, Vol. 105, No 2

⁵NACADA is an association of professional advisors, counselors, faculty, administrators, and students working to enhance the educational development of students.



I really owe everything to SCU. Without SCU, I would not have reached where I am today and I've seen several of my classmates do extremely well also.



**Nandini Nair,
SCU MD Graduate**

Currently Medical Director, Advanced Heart Failure and Mechanical Circulatory Support/
Transplant Cardiology and Professor of Medicine, Division of Cardiology, Texas Tech
University Health Sciences Centre Lubbock, Texas

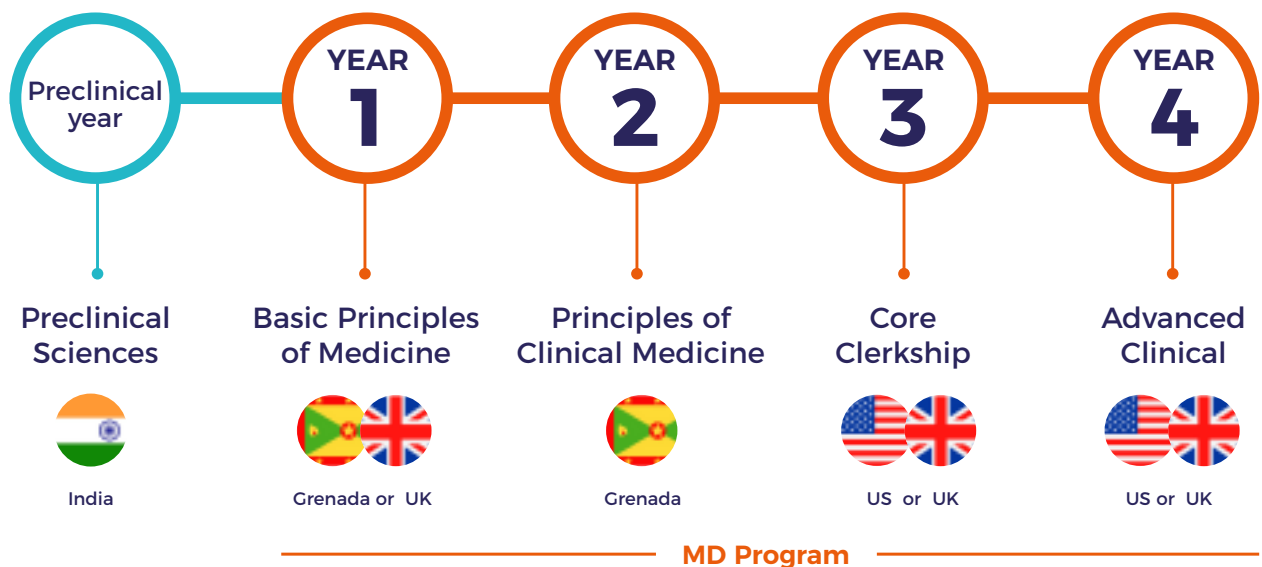
THE ACADEMIC PATHWAY

5-Year Pathway Outline

1-YEAR PRE-CLINICAL
CERTIFICATE PROGRAM
START AT RAMAIAH

BASIC SCIENCES

CLINICAL PROGRAM



With my international upbringing, I really enjoyed living and learning in three different countries.



Dhruv Gupta
SGU MD Graduate



Preclinical
Sciences



PRECLINICAL CERTIFICATE PROGRAM IN INDIA

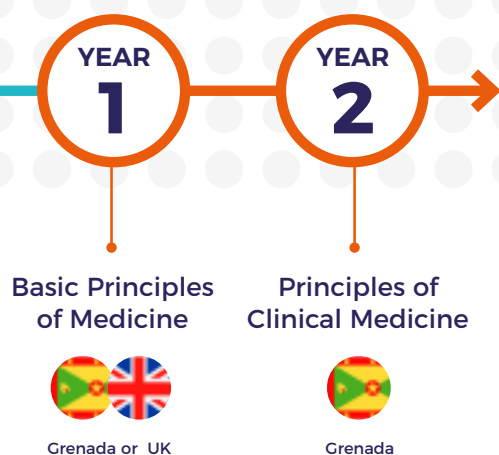
The preclinical curriculum is designed as a firm foundation for the advanced studies offered later in the 4 year MD degree study at St. George's University. This year of Preclinical study comprises of preclinical sciences, social sciences, and humanities, and serves as a foundation to the basic sciences, which comprise the first two years of the 4-year MD degree program at St. George's University. Aspirants will study at Ramaiah International Medical School in Bengaluru, taking a number of subjects: Introduction to Biochemistry, Cell Biology, introduction to Practical Skills for Health Sciences, Molecular Biology, Microbiology, Physiology, Human Anatomy, Biochemistry, Learning Strategies for the Pre-professional Programs, Communication for the Health Professions, and Abnormal Psychology. Students will have access to all of Ramaiah's facilities, resources, and faculty.

The curriculum is closely aligned with what preclinical students are taking at the SGU campus in Grenada or at Northumbria University, our partner university in the UK. During this first year in India, students are offered a variety of opportunities to prepare for their studies and life in Grenada and/or the UK in the following four years of their MD study.



UNIQUE STUDENT SUPPORT SYSTEM

Time management, study and test taking skills, and help with reducing anxiety are just a few of the services SGU offers that help SGU students to be successful with their studies. Our Academic Enhancement Program, for example, has been recently recognized by NACADA, the National Academic Advising Association, and is designed to assist students in developing their test taking skills.



YEAR 1 & 2: BASIC SCIENCES IN GRENADA OR THE UK

The first two years of the MD degree program concentrate on the traditional basic science disciplines. Laboratory experience is an integral part of these first two years, along with small group discussions designed for problem-based learning and early integration of the clinical medicine into basic sciences. Students will move to our Grenada campus for their first year of basic sciences, or alternatively can complete this year in the United Kingdom, studying at Northumbria University, which is our partner university in the UK and delivers our MD degree program on a beautiful modern campus in Newcastle. On completing the first year of Basic Sciences, students are eligible to receive a Bachelor of Medical Sciences degree awarded by Northumbria University.

Part of the Basic Sciences program is selectives, which provide a structured learning experience in diverse clinical and scholarly areas. They give students the opportunity to integrate basic sciences knowledge into clinical areas and provide a transition into clinical medicine. Selectives are offered by various departments and coordinated through the Office of the Dean of Basic Sciences. Selective activities have included international travel experiences to Kenya, Prague, Sweden, Thailand, and Honduras. Please note: Selectives are optional.



- 50% of MD courses are taught in small groups
- 8:1 students-to-faculty ratio in small group sessions
- 465 SGU basic sciences faculty members based on our campus in Grenada
- 1,500 SGU clinical faculty members in the hospitals in the US and UK

YEAR
3

Core
Clerkship



US or UK

YEAR
4

Advanced
Clinical



US or UK



YEAR 3 & 4: CLINICAL SCIENCES IN THE US OR UK

The final two years focus on clinical sciences, with training available at more than 70 leading hospitals and health systems in the United States, and United Kingdom. Our approach to clinical training gives students an opportunity to learn medicine in a broad network of hospital settings throughout the US and the UK with core rotations, subinternships, primary care, and elective rotations. Clinical training emphasizes responsibility, maturity, and compassion in the development of professional excellence.

Students learn how to conduct themselves as physicians, take responsibility, work harmoniously with professional colleagues, and exhibit maturity. Currently, core rotations include: Medicine (12 weeks), Surgery (12 weeks), Paediatrics (6 weeks), Obstetrics and Gynaecology (6 weeks), and Psychiatry (6 weeks).

Students complete the core rotations before doing additional requirements and electives. Elective choices and schedules are arranged individually by students, in consultation with SGU. Currently, the required electives include: Family Medicine (4-6 weeks), Medicine SubInternship (4 weeks), Medicine Elective (4 weeks), and Additional Electives (24-26 weeks).



HIGHLY QUALIFIED, DEDICATED FACULTY

Our Faculty is highly qualified, dedicated to teaching, and committed to learning and utilizing the best teaching techniques of the modern international world of education. Our faculty members with professorial rank all have terminal degrees such as a PhD, an MD or equivalent, or both. Distinguished visiting scholars from around the globe, from leading hospitals and universities, lecture in the School of Medicine.

1,025

**US & CANADA RESIDENCY
PLACEMENTS IN 2020***

*Data as of March 2020.



#1

**PROVIDER OF FIRST-YEAR
US RESIDENCIES FOR THE
LAST 10 YEARS COMBINED****

**Data as of September 2019.

91%

**OF ELIGIBLE INTERNATIONAL 2019
GRADUATES WHO APPLIED FOR A US
POSTGRADUATE POSITION OBTAINED
ONE AT THE TIME OF GRADUATION*****

***Data as of Sept 2019; includes non-US/permanent residents.



OVER 70

**HOSPITALS AND HEALTH
SYSTEMS OFFER CLINICAL
AND AMBULATORY TRAINING
TO SGU STUDENTS**



DESTINATION HOSPITALS

St. George's University School of Medicine is a top international medical university, with long standing relationships with over 70 hospitals and clinical center partners in the US, UK. These trusted connections allow our students to gain a breadth of knowledge with different patient populations in a variety of environments and gain valuable international experience during their clinical rotations. A student who makes full use of all of the clinical opportunities at SGU will graduate having experienced medicine as it is practiced and taught in Grenada, the United States, and the United Kingdom.

To see our network of partner hospitals, which currently comprises of more than 70 hospitals and clinics, please visit:

**[www.sgu.edu/
academic-programs/school-of-medicine/
affiliated-hospitals/](http://www.sgu.edu/academic-programs/school-of-medicine/affiliated-hospitals/)**

SGU graduates have practiced in each of the Top 20 Hospitals in the US (according to the US News & World Report 2018-2019):

- Mayo Clinic Rochester
- [Cleveland Clinic](#)
- John Hopkins Hospital Baltimore
- [Massachusetts General Hospital Boston](#),
- University of Michigan Hospitals – Michigan Medicine Ann Arbor
- [UCSF Medical Centre San Francisco](#)
- UCLA Medical Centre Los Angeles
- [Cedars-Sinai Medical Centre Los Angeles](#),
- Stanford Hospital Stanford
- [New York Presbyterian Hospital - Columbia and Cornell](#)
- Barnes Jewish Hospital St Louis
- [Mayo Clinic Phoenix](#)
- Northwestern Memorial Hospital Chicago,
- [Hospital of the University of Pennsylvania](#)
- Presbyterian Philadelphia
- [NYU Langone Hospitals New York](#)
- UPMS Presbyterian Shadyside Pittsburgh,
- [Vanderbilt University Medical Centre Nashville](#),
- Mount Sinai Hospital New York
- [Duke University Hospital Durham](#)
- Brigham and Women's Hospital Boston



I gained a lot of practical experience and understanding of how US hospitals operate when I had a chance to do my clinical rotations in New York. The university's wide accreditation is very impressive, and this was very important for me as I knew I want to have the ability to come back and contribute to my home country in the future.



Arushee Jaini, India
SGU MD Graduate and Medical Council of India (MCI) license holder



DOCTOR OF MEDICINE (MD) DEGREE & ACCREDITATION

On completion of the 4-year MD program at SGU, aspirants will be awarded an M.D. (Doctor of Medicine) degree, which is an internationally recognized degree prevalent in the United States, Canada, and many other countries. The degree is awarded by St George's University, which is listed with the World Health Organization (WHO), and is recognized by The Medical Council of India (MCI). For a full, up-to-date list of our accreditations, [please visit: www.sgu.edu/about-sgu/accreditations-approvals/](http://www.sgu.edu/about-sgu/accreditations-approvals/)

Stage (location)	Degree/Certificate
On completion of Preclinical Program (India)	Certificate in Higher Education in Medical Sciences – Ramaiah University
On completion of Year 2 of MD Program (UK, Grenada)	Bachelor of Medical Sciences with Honors – Northumbria University
On completion of Year 4 of MD Program (US, UK)	Doctor of Medicine (MD) Degree – St. George's University

In order to practice medicine in India the students would have to take the Foreign Medical Graduates Examination (FMGE), which is a licensure examination conducted by the National Board of Examinations (NBE) in India.

Amongst SGU's 17,000 M.D. alumni worldwide, there are 307 MD alumni from India, and at the moment, there are over 100 aspirants from India studying for their Doctor of Medicine (MD) degree at SGU in Grenada. Overall, our graduates have practiced in more than 50 countries around the world, and SGU is the largest international provider of physicians licensed in the US.

In each state of the United States of America, SGU graduates have met the State Medical Board Medical Licensure requirements, to practice medicine. Some of our graduates also decide to practice medicine in the UK, and over 145 SGU doctors have been registered with the General Medical Council in the UK.





RAMAIAH BENGALURU

Today, most of the institutions operate out of one 76-acre campus named Gnanagangothri (the Wellspring of Knowledge). The campus boasts a one-of-kind Advanced Learning Centre (ALC) that complements conventional bedside teaching by bringing practice-based learning to the fore. The center focuses on hands-on training and workshops where students are taught basic and advanced surgical skills and is well known for its frequent workshops and implant validation programs. The ALC has an advanced multimedia section with a 100-person seating capacity, which enables students to observe medical procedures virtually.

The campus also features well-equipped study rooms, lecture theatres, training spaces, social and dining facilities, residential accommodation, an exceptional central library that comprises thousands of books and journals from 235

countries, as well as a number of state-of-the-art labs. The medical skills lab, for example, is used for teaching students basic skills, such as trauma life support and advanced cardiac life support, using contemporary mannequins, models, and simulation techniques. There are 3 on-campus hospitals, which have 1,650 beds with real patients, to meet the students' training needs and there are four peripheral hospitals.

The campus features a Food Street that hosts different eateries that offer international and local food at affordable prices. Moreover, a variety of facilities like laundry, stationery stores, grooming parlors, and grocery stores are available either on or around campus.





ST GEORGE'S UNIVERSITY GRENADA

Our Grenada campus rises atop a peninsula in the southwest corner of Grenada and is a beautiful combination of Georgian architecture visually enhanced with vivid Caribbean colours. More than 65 buildings spread across the vibrant seaside location. The campus is always expanding to keep up with the latest technologies and to provide students with the best learning environment. The campus features a state-of-the-art library, lecture halls, study spaces, labs, a bank, a mailroom, a playing field, a variety of

dining and coffee outlets, dormitories, events venues, a security center, a gorgeous beachfront, a bookstore, a psychological services center, a healthcare clinic, a security center, as well as a multi-purpose fitness & wellness center.

To see our beautiful campus, please take a virtual tour of our beautiful campus:
www.sgu.edu/student-experience/experience-the-campus/

HOUSING

All non-residents of Grenada must live on campus at least for their first two terms. Living on campus provides more opportunities to work and socialize with other students and faculty than off-campus life, giving you more time to meet people, cultivate relationships with faculty members, and make new friends. Your education will be enhanced by the opportunity to access study groups, campus activities, the library, and recreational facilities. The campus provides a wide range of accommodation to best suit the needs of our multi-aged and multicultural student community. Most of the residences have been configured as suites with a varying number of bedrooms (single or double), each with its own bathroom, opening into a common kitchen/living area.

All residences have air conditioning and Internet access. Complimentary cleaning and maintenance service are also included. All dormitories are staffed with Resident Assistants (RAs), who foster a community of mutual respect and cooperation—and provide assistance to students when needed. RAs are available to ensure that students are issued keys and comfortably settled in to their rooms; they are available to handle emergencies 24-hours a day. All True Blue residence halls have laundry facilities and all bedrooms are furnished with twin-size beds, chairs, desks, closet space, and bookshelves. Kitchen facilities include a refrigerator, cooktop stove, and microwave.

To find out more about our campus housing, please visit: **www.sgu.edu/accepted-students/housing-information/grenada-campus-housing/**



ABOUT GRENADA



FLIGHTS & VISAS

Grenada is a beautiful Caribbean island located close to the US and Canada, and several major airlines offer direct flights to Grenada, for example:

- American Airlines has a non-stop service from Miami: 3h45mins
- JetBlue Airways operates a non-stop service from New York: 4h40mins
- Delta Airlines operates a non-stop service from Atlanta: 4h30mins
- Air Canada operates a non-stop service from Toronto: 5h15mins
- Condor operates a non-stop flight from Frankfurt: 10h15mins
- British Airways & Virgin Atlantic offer direct flights from London: 11h30mins

Currently, family members and friends of our students who are India passport holders, can visit Grenada for 1-3 months visa-free. All SGU students who are non-citizens of Grenada can easily obtain their visa on arrival, on presenting their SGU acceptance documents.

GOVERNMENT

English is Grenada's official language and it is a member of the Commonwealth realm. For more than 300 years, Grenada was an agricultural colony for European powers, first settled by France, then by Great Britain. It gained independence in 1974 and is governed by a parliamentary democracy. Elected representatives form a government, and Queen Elizabeth II is the Head of State.

CLIMATE

Although the country has a tropical climate, it is located below the hurricane belt (the path that most hurricanes follow). The average temperature in Grenada is 27 degrees, and the average sea temperature is 29 degrees.

SAFETY

Grenada is a peaceful nation, and widely considered one of the most welcoming islands in the Caribbean. The US Department of State assigns Grenada a level-one rating, which means it is in the safest group out of the four groups that the US Department of State uses to classify countries by their average crime rates. In addition, SGU's security officers patrol university grounds 24 hours a day, 7 days per week, 365 days per year.

HEALTHCARE

Students who study in Grenada can access quality health care through an on-campus clinic. University Health Services (UHS) provides medical support to the university community and offers a wide variety of services, from primary health care to off-hours urgent care. The clinic is open for routine services from Monday through Friday, and a duty nurse is on call 24 hours every day.

ACCOMMODATION

Families and friends who would like to visit have a variety of high quality accommodation options to choose from to suit all budgets, including hotels and beach resorts.

FOOD

Well known for its outstanding fish and seafood, cocoa, and spices, Grenada offers a large variety of food options, including Halal and vegetarian food. There is a good selection of supermarkets and local markets for fresh produce on the island. Restaurants offer Indian, Caribbean, Japanese, French, Italian, Thai, Chinese, American, and other international cuisines.

TUITION FEES & SCHOLARSHIPS

We understand that any international medical career pathway requires substantial resources, and therefore we have developed this information as a personal budgeting resource to assist international applicants. Please note that students should not expect to support themselves through employment while attending the university.

In the best interest of the student, a comprehensive financial plan is necessary in order to determine whether you have the resources necessary to complete this pathway. We recognize that all sources of funding may not yet be secured at the time of application.

TUITION COSTS (2020/21)

Year	Term	Tuition	Fees	Total
Preclinical Year	1+2	\$15,000	\$600	\$15,600
Medical Year I Basic Principles of Medicine	1	\$25,720	\$5,544	\$31,264
	2	\$25,720	\$5,544	\$31,264
Medical Year II Principles of Clinical Medicine	3/4	\$35,377	\$7,390	\$42,767
	5	\$28,986	\$5,544	\$34,530
Medical Year III Core Clerkship	1	\$27,138	\$4,422	\$31,560
	2	\$27,138	\$4,422	\$31,560
	3	\$27,138	\$4,422	\$31,560
Medical Year IV Advanced Clinical	4	\$27,138	\$4,422	\$31,560
	5	\$27,138	\$4,422	\$31,560

ADDITIONAL SGU FEES

Malpractice Insurance Clinical Terms 1-5 (\$357/term)	\$1,785
Graduation Fee	\$772
Mandatory Term 1 Books	\$1,926

BENGALURU ACCOMMODATION COSTS

Accommodation fees	Total
Single room occupancy (Per annum)	\$3,000 USD
Double room occupancy (Per annum)*	\$2,000 USD
Family quarters (Per annum)*	\$6,000 USD

*Cost includes Electricity, Water, Maintenance, Wi-Fi, excluding Food

Note: Tuition fees are subject to change and up to date information can be found at: www.sgu.edu/academic-programs/school-of-medicine/tuition-fees/



From New Delhi to Grenada to New Jersey and now Omaha, my SGU journey can be best described as both humbling and gratifying. Not only did SGU enable me to fulfill my dreams and aspirations, it also allowed me to make lifelong relationships with people I met during my journey.

Saurabh Chandan, India
SGU MD Graduate



ADDITIONAL ESTIMATED LIVING EXPENSES IN GRENADA

It is suggested that students review the remaining items in the cost of attendance below in order to assess their ability to fund their entire education. Living and travel expenses will vary amongst each individual's country of origin and lifestyle choices. However, it is important to understand additional costs that may be incurred and plan for these expenses if needed. The below fees represent averages and can vary depending upon the student's needs.

Year	Term	Housing	Food	Transport	Books	Insurance	Misc	Total
Medical Year I: Basic Principles of Medicine	Term 1	\$6,106	\$1,394	\$1,500	\$2,076	\$2,633	\$3,085	\$16,794
	Term 2	\$6,106	\$1,476	\$1,500	\$162	\$0	\$3,060	\$12,304
Medical Year II: Principles of Clinical Medicine	Term 3/4	\$8,164	\$1,968	\$1,500	\$1,270	\$2,633	\$4,275	\$19,810
	Term 5	\$6,106	\$1,476	\$1,500	\$668	\$0	\$3,060	\$12,810
Medical Year III: Core Clerkship	Term 1	\$6,000	\$1,136	\$1,500	\$100	\$2,633	\$2,720	\$14,089
	Term 2	\$6,000	\$1,136	\$1,500	\$100	\$2,633	\$2,720	\$14,089
	Term 3	\$6,000	\$1,136	\$1,500	\$100	\$2,633	\$2,720	\$14,089
Medical Year IV: Advanced Clinical	Term 4	\$6,000	\$1,136	\$1,500	\$100	\$2,633	\$2,720	\$14,089
	Term 5	\$6,000	\$1,136	\$1,500	\$100	\$2,633	\$2,720	\$14,089

SCHOLARSHIPS FOR INTERNATIONAL STUDENTS

We offer partial-tuition scholarships for the 4-year Doctor of Medicine program at SGU which are awarded to international students who exhibit academic excellence and demonstrate financial need. These awards are grants-in-aid and do not have to be repaid. Students should apply using the International Bursary Application and will also need to submit a Confidential Financial Statement.

To find out more, please visit:
www.sgu.edu/academic-programs/school-of-medicine/financial-aid-and-scholarships/#scholarships



HOW TO APPLY

ADMISSIONS REQUIREMENTS

All candidates are required to meet or exceed our academic standards.

For our up-to-date English language requirements, please visit the pathway's website: www.sgu.edu/ramaiah

International students are exempt from the MCAT admission requirement.

ACADEMIC QUALIFICATIONS

India School Diploma 10 + 2 years:

Avg 80% ; Biology, Chemistry, Math, Physics, English, no grade below 80%

A-Levels Graduate:

Minimum 3 subjects As or Bs; Biology, Chemistry, and either Math or Physics; Biology, Math, or Physics can be accepted at AS level with strong non-science third A Level.

IB Diploma (IBDP):

A minimum score of 32 points is required; 3 HL science subjects recommended; minimum of 2 HL subjects required, which must include Chemistry and Biology; results 5 or higher.

Associate Degree:

60 credits or equivalent; must include Biology, Chemistries, and Math.



I chose SGU due to the high success and match rate of its graduates. I completed one premed year at SGU, which helped me to understand the education system and ease my transition to medical school.



**Jasmay Randhawa, India
Current MD Student**

APPLICATION PROCESS



**FILL OUT
APPLICATION**
sgu.edu/apply-now



**SUBMIT
TRANSCRIPTS
AND LETTERS OF
RECOMMENDATION**



INTERVIEW



**ADMISSION
DECISION**



**ACCEPT OFFER
AND SUBMIT
DEPOSIT TO
SECURE YOUR
SPOT**



**TRAVEL TO
BENGALURU**



**START
STUDYING
MEDICINE!**







INTERNATIONAL DOCTOR OF MEDICINE (MD) PATHWAY

ST. GEORGE'S UNIVERSITY-RAMAIAH

Mr Salil Gupta, Director, Transnational Education (TNE), South Asia.

Email: ramaiah@sgu.edu

WhatsApp: +91 999 727349

