



CONTINUOUS LEARNING

INTERNATIONAL

PREPARATORY &
LIBERAL STUDIES

ARTS & DESIGN

COMMUNITY SERVICES
& EARLY CHILDHOOD

HEALTH SCIENCES

HOSPITALITY &
CULINARY ARTS

CONSTRUCTION &
ENGINEERING TECHNOLOGIES

BUSINESS

International Student Guide 2015-2016

Study in Toronto, Canada

georgebrown.ca/international

facebook.com/georgebrowninternational



GEORGE BROWN COLLEGE



ST. JAMES
CAMPUS



- State-of-the-art campuses in downtown Toronto
- Over 25,800 students (full-time enrolment) – including over 3,500 international
- Over 140 programs – degrees, diplomas, postgraduate programs
- Work experience opportunities through placements and co-op

Located in downtown Toronto, you live, learn and work in the heart of Canada's biggest, most diverse economy. Choose from a large number of career-focused certificate, diploma, postgraduate and degree programs. The city and the College offer you the opportunity to gain valuable work experience with leading multinational employers during your studies and after you graduate. Our campuses are home to a number of wonderful social and athletic activities and Toronto is a vibrant city that hosts a wealth of cultural, recreational and personal development experiences.

Our School of Design is home to the city's first video game incubator, assisting in the growth of Toronto's gaming industry and providing field education opportunities to George Brown video game design students.

In 2013, student teams from George Brown College participated in the CGA (Certified General Accountants) Ontario Student Case Competition. Competing against more than 20 teams from 16 Ontario colleges, George Brown won both 1st and 3rd place.

George Brown's new applied research facility is set to open in Fall 2014. Thought to be the first facility of its kind in Canada, it will connect the Canadian construction sector with applied research in green construction and sustainable building practices.

Our student-run restaurant, The Chefs' House, is a fully functioning restaurant and popular dining destination that provides students with real-world experience.

Our Centre for Hospitality and Culinary Arts has produced many remarkable alumni, including Mark McEwan (Judge on *Superstar Chef Challenge*), Lynn Crawford (Judge on *Chopped Canada*), Jamie Kennedy (Recipient of the Governor General's Award and the Order of Canada), Minaz Abji (Executive Vice President, Host Hotels and Resorts), and Randy Morton (President and CEO, Bellagio, Las Vegas).

We are one of the first colleges to utilize motion capture technology and our motion capture suit is the same model used to create Gollum for the *Lord of the Rings* films.



CASA LOMA
CAMPUS



WATERFRONT
CAMPUS



CENTRE FOR HOSPITALITY
AND CULINARY ARTS



"International students are valued members of the George Brown community. Students attend our college from all over the world, so our graduates build work contacts and friendships across the globe as well as with Canadians. I wish you the best of success in choosing a college and program of study, and ultimately in finding a rewarding career."

Anne Sado

Member of the Order of Canada
President
George Brown College



George Brown College is seen as the Greater Toronto Area college with the strongest relationships with industry and the college that best equips graduates to get the job they want.

Environics, Consumer Tracking Research,
Perceptions of George Brown College
and Potential Opportunities,
September 28, 2012

PROGRAM AREAS



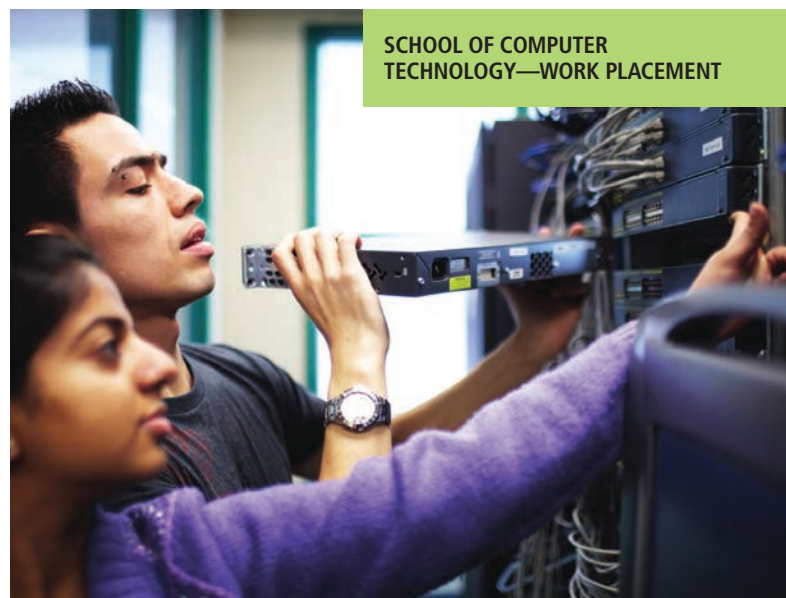
SCHOOL OF BUSINESS
—GRADUATE IN THE WORKPLACE



CHEF SCHOOL—CULINARY LAB



SCHOOL OF DESIGN



SCHOOL OF COMPUTER
TECHNOLOGY—WORK PLACEMENT

At George Brown College, you can choose from a large number of programs which will provide you with the skills you need to succeed in the modern workplace. Major areas of study include:

BUILDING TECHNOLOGIES
FASHION AND JEWELLERY
HOSPITALITY & TOURISM MANAGEMENT
BUSINESS AND FINANCE
INFORMATION TECHNOLOGY
COMMUNITY SERVICES
GENERAL ARTS & SCIENCE

MECHANICAL ENGINEERING
CULINARY ARTS
GRAPHIC DESIGN
PERFORMING ARTS
EARLY CHILDHOOD DEVELOPMENT
HEALTH SCIENCES

For information on program availability for international students, please see: georgebrown.ca/international/futurestudents/programs/



"Only George Brown has the postgraduate program that I was looking for. My program has a bit of everything, which is demanded in this field. The classes were designed to give us up-to-date skills required in the design industry. I'm applying these skills in my current work."

Antonia Kostiuk
Graduate 2012, Advanced Digital Design

ENGLISH FOR ACADEMIC PURPOSES is a full-time program divided into 9 levels of 8 weeks each. Your language skills are assessed when you arrive at the College and you begin at the level that is right for you. Most students study for 6–10 months. The program prepares you for further academic study at the College.

DIPLOMA/CERTIFICATE PROGRAMS are one, two or three academic years in length. Most programs have start dates in September and/or January.

POSTGRADUATE PROGRAMS are offered for students who have already graduated from a university or college program. These are highly specialized 8 or 12 month programs designed to give graduates advanced skills in a specific professional field.

DEGREE PROGRAMS are offered in Financial Services, Hospitality Operations Management, Construction Science & Management, and Early Childhood Development. These are four-year Bachelor Degree programs, combining theoretical learning with opportunities for co-op or field placement.

UNIVERSITY TRANSFER A George Brown College diploma is a passport to further education at many Canadian and foreign universities. For information on current transfer agreements and future study options for graduates, see the Transfer Guide at transferguide.georgebrown.ca



"When you look at the set-up here, I wish I were a student! Honestly, when I went to college, we had nowhere near the kind of set-up they've got here at The Chefs' House. I'm blown away with the standards that are produced here."

Chef Gordon Ramsay
Canada AM, CTV National,
February 2009

George Brown offers a wide variety of programs and learning pathways. Selecting a program that fits your career goals and interests is key to your academic and professional success.

A more detailed listing of our programs is available on pages 21–23.

ENGLISH FOR ACADEMIC PURPOSES



For students interested in taking the IELTS test in Toronto, the George Brown College Official IELTS Test Centre provides a complete IELTS Testing service. For more information, please visit: georgebrown.ca/ielts

George Brown College has signed an articulation agreement establishing exit standards that allow EAP graduates to satisfy English language proficiency requirements at 14 participating colleges, without requiring further admissions testing for a diploma program.

For more information, please visit: georgebrown.ca/international/futurestudents/esl

George Brown College is a leading English as a Second Language (ESL) provider with more than 35 years of experience. Whether you are interested in preparing for a college education or improving your English communication skills for personal or professional reasons, the English for Academic Purposes (EAP) program offers a rewarding learning experience in a multicultural setting. EAP offers full-time English instruction through 9 levels, each 8 weeks long. For students who wish to study in Canada, EAP provides the opportunity for direct entry to diploma, degree and postgraduate programs at George Brown College. General Education courses taken in levels 7 and 8 can also be used as credits that count towards your GPA for diplomas at many Ontario colleges.

PROGRAM HIGHLIGHTS

- **Interactive classroom technology:** Time spent in class is exciting and efficient
- **Expert academic instructors:** Language instruction is of the highest quality
- **Great downtown location:** Study in the heart of a wonderful city
- **Vibrant student life:** Extracurricular activities augment your learning
- **Supportive learning environment:** George Brown is committed to your success
- **Highly valued credentials:** Graduates of level 8 receive an Ontario College Certificate*
- **Relevant, refined curriculum:** English for Academic Purposes prepares you for post-secondary study

* To be eligible, students need to complete at least 2 EAP levels at George Brown

FOCUSING ON STUDENT SUCCESS

Peer tutoring: Peer Leaders are all successful students and graduates of George Brown's School of ESL. They are ready to assist students by passing on effective learning strategies, leading workshops and giving feedback.

Integrated learning: Our learning model integrates reading, writing, speaking and listening to give students a comprehensive and versatile understanding of the English language.

Highly qualified faculty: All professors are TESL-certified university graduates. Our professors are involved in the training of new ESL teachers and practice according to the highest professional standards and current methods.

TIMETABLE

TIME	MONDAY			TUESDAY	WEDNESDAY	THURSDAY	FRIDAY
	Levels 1-6	Levels 7-8	Level 9	Levels 1-9	Levels 1-9	Levels 1-9	Levels 1-9
9:00-9:50	Specialized Class	General Education	Independent Study	Core Class	Core Class	Core Class	Core Class
9:50-10:40	Specialized Class	General Education	Independent Study	Core Class	Core Class	Core Class	Core Class
10:40-11:20	BREAK	BREAK	BREAK	BREAK	BREAK	BREAK	BREAK
11:20-12:10	Specialized Class	General Education	Independent Study	Core Class	Core Class	Core Class	Core Class
12:10-1:00	Specialized Class	General Education	Independent Study	Core Class	Core Class	Core Class	Core Class

English In Practice Schedule* – Sign Up At [Gbcesl.eventbrite.ca](https://gbcesl.eventbrite.ca)

1:30-3:30	Passport Workshops	Passport Workshops	Passport Workshops	Passport Workshops	No Classes
-----------	--------------------	--------------------	--------------------	--------------------	------------

*Workshops Are Optional In Levels 7-9. In Levels 1-6, International Students Attend 7 Per Session.

Core Class (Levels 1-9): 2 hours/week on-line **General Education (Levels 7-8):** 2 hours/week on-line

THE ESL BUSINESS PROGRAM

This is English study for students planning to enrol in a full-time academic business program. You can enter after completing level 6 in the EAP program. It focuses on real-life communication skills required in business settings.

EXTRACURRICULAR ACTIVITIES

In addition to regular classwork there are a host of activities, events and workshops that you have the opportunity to participate in as an ESL student. The *Amazing Race* is a fun summer event where ESL students explore the College and the city. *Caravan* is an annual event where students celebrate their nationalities. Many other special and seasonal events are celebrated throughout the year, such as pumpkin carving, *Halloweek*, a holiday party, and regular field trips to local attractions and museums.

The School of ESL facilitates volunteering opportunities for ESL students. These are a great way to get involved, improve your English, meet new people and gain Canadian experience. You also have access to facilities and services across the College such as the gymnasium, counselling services, etc.



SCHOOL OF ESL
AT ST. JAMES CAMPUS



"Some of my best memories are of my time studying at George Brown College. From the faculty to the learning environment, my time there was more than what I could ever have expected. George Brown taught me that I could succeed as a student, a contributor and a professional. The knowledge and skills I learned will last me a lifetime."

Wei Zhang

Administrative Assistant
KVB Kunlun Canada Inc.
ESL Level 8 (2011)
International Business Management (2012)

LIFE AT GEORGE BROWN COLLEGE



**SMART START ORIENTATION FOR
INTERNATIONAL STUDENTS**

As a George Brown student some of your most rewarding experiences will occur as you take part in the cultural, social and athletic activities happening on campus. You'll have countless opportunities to make lifelong friends, develop new interests, and enrich your College experience – so get involved, make friends and, most of all, have fun!

ORIENTATIONS

At academic program orientation sessions, students receive vital information such as final class schedules and lists of books to help them prepare for studies at George Brown College. The International Centre also organizes orientation events at the beginning of each semester that provide important information on transportation, banking, health insurance, working in Canada, scholarships and so on. Around the end of August the International Centre organizes SMART START, a fun event where new students are introduced to the city and various services offered at George Brown College. The College has many other exciting social and cultural events taking place throughout the year.

LEARNING RESOURCES

George Brown provides you with access to learning resources and open access computing through our campus Library Learning Commons. Here you will find the technology, resources and assistance required to do your research, course assignments and independent study. Check out the Library Learning Commons at library.georgebrown.ca and in person as soon as you arrive on campus.

At the Peer-Assisted Learning Centre George Brown College's Peer Advisors help you understand your learning style and connect you with other students to form study groups. This is an excellent way to develop personal learning strategies to support your academic success. The Centre also offers English as a Second Language (ESL) conversation groups.

BEYOND THE CLASSROOM

As a student, you'll be able to get involved in fitness and sports activities such as instructional classes, drop-in sports and organized leagues through the fitness centres at our main campuses. George Brown's men's and women's varsity sports teams, The Huskies, are part of the Ontario College Athletic Association and compete against other Ontario colleges in many sports, including badminton, baseball, basketball, cross-country running, golf, soccer and volleyball.

George Brown also has a huge range of clubs for you to follow your interests — or find new ones — beyond the classroom. Student cafeterias, wireless access points, restaurants, bookstores, convenience stores, and so on, are all available on-campus to help you make the most of your time spent at the College.

INTERNATIONAL STUDENT AMBASSADOR PROGRAM

Looking to volunteer on campus and meet new friends? The International Student Ambassador program provides students with the opportunity to get involved in the George Brown College community, while offering them the chance to meet new friends and gain valuable Canadian volunteer experience.

Current international students at George Brown volunteer their time as International Student Ambassadors at a variety of events and programming throughout the school year. Ambassadors who volunteer at a predetermined number of events in a given school year receive a certificate from our Director and a monetary honorarium.



George Brown has a vibrant campus community and fosters a supportive learning environment committed to student success.

LIVING IN TORONTO



YONGE & DUNDAS – A FOCAL POINT
OF DOWNTOWN TORONTO

Photos courtesy of the City of Toronto

NATHAN PHILLIPS SQUARE



At George Brown College you'll be studying in the downtown heart of a wonderful city. Toronto is one of the world's most multicultural cities and is home to world-class art galleries, museums, theatres, restaurants and sports centres. George Brown's location in the downtown core means that you're at the centre of the action. Toronto's community includes over 90 ethnic groups originating from over 169 countries speaking over 100 languages. As you familiarize yourself with the city, Toronto's official website toronto.ca is a valuable source for information on Community Events, Public Health, Maps, Cycling Information, Attractions, and more!

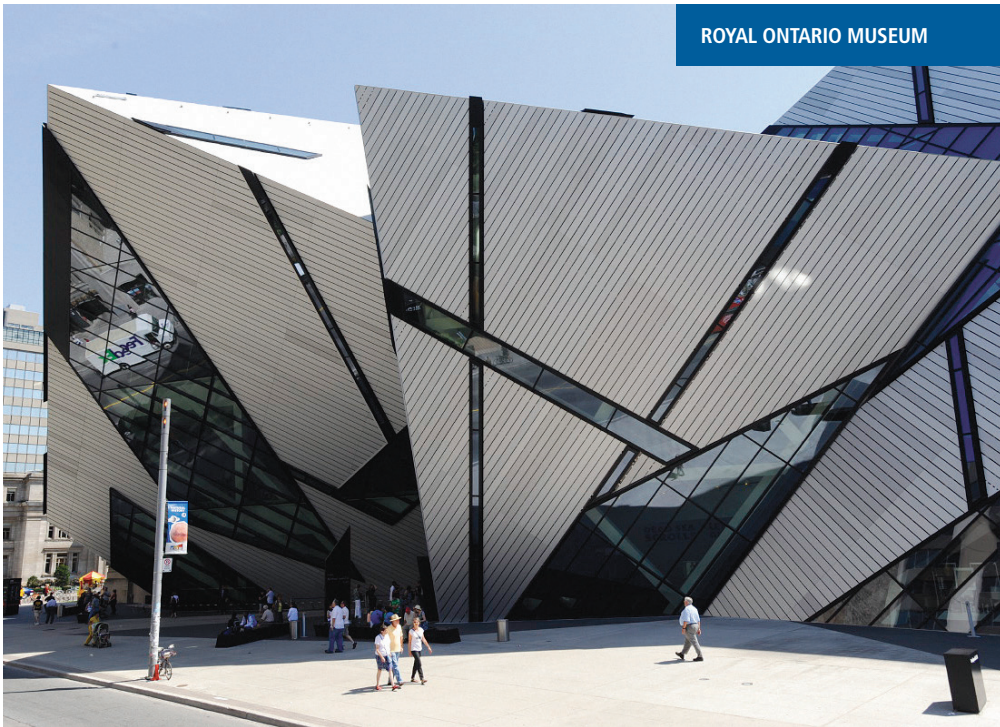
HOMESTAY ACCOMMODATION

Student Homestay Services, George Brown College's longtime partner in student homestay accommodation, maintains a network of caring families who will help make your transition to living and studying in Canada a friendly and supportive experience. You can stay for an initial 4 or 8 week period while familiarizing yourself with the city and the College as well as searching for a place to live that is convenient for you.

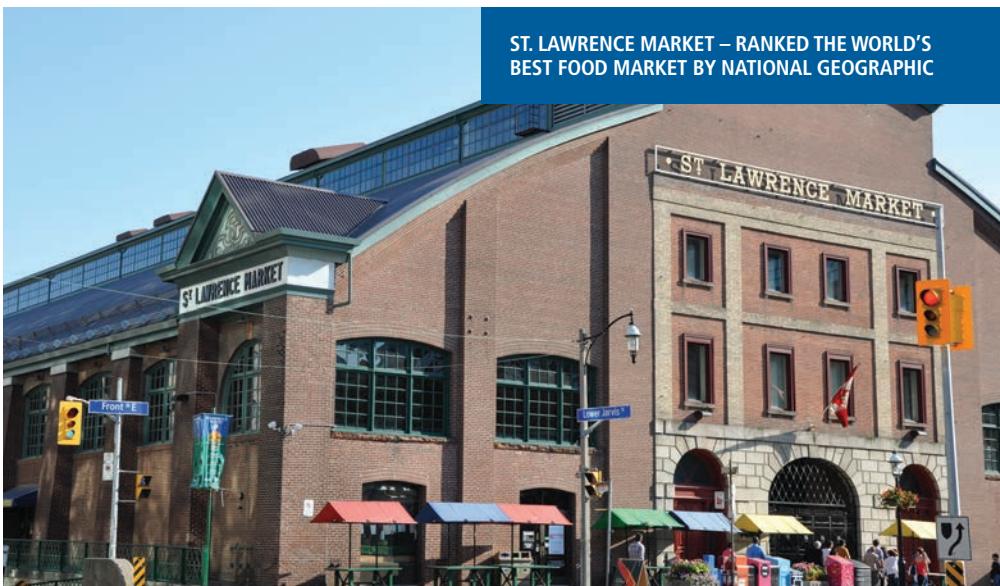
If you require homestay accommodation (with optional airport pick-up), make sure that your homestay application reaches Student Homestay Services at least three weeks before your arrival date. Apply at homestayservices.ca

HOUSING OPTIONS

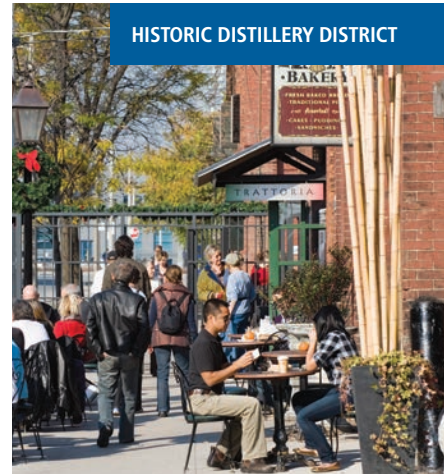
Toronto has a large housing and rental market that offers numerous accommodation options for students. Rent can be costly in a large city like Toronto so, while there are opportunities to be found (especially if you are willing to share a space), it is very important to establish a reasonable budget and give yourself plenty of time to explore your options.



ROYAL ONTARIO MUSEUM



ST. LAWRENCE MARKET – RANKED THE WORLD'S BEST FOOD MARKET BY NATIONAL GEOGRAPHIC



HISTORIC DISTILLERY DISTRICT



CHINATOWN

WORKING IN CANADA



"TD Bank works with George Brown College in a number of beneficial ways, we hire George Brown's grads, we also offer work terms to their co-op students, who bring us their enthusiasm, creativity and know-how in the exchange for the opportunity to get real-life work experience."

Doug Turnbull
Vice Chair
TD Securities

In 2013-14, 75% of our programs offered field education opportunities.

Toronto is home to most of Canada's major employers in financial services, tourism, fashion, software development, manufacturing, communications, entertainment, design and health services. For example, GM, Ford, IBM, TD Bank, and the Toronto Stock Exchange all have their offices in and around Toronto. The city and the College offer you unparalleled opportunities to gain valuable work experience with leading multinational employers while attending college and after graduation.

FIELD EDUCATION

Many employers look for real-world work experience when hiring new graduates and this is where George Brown can give you a competitive edge in the job market. Most of our programs have a field education component, which means you have a valuable opportunity to work and learn with industry partners that may become your future employer.





"George Brown College opened up unlimited job opportunities for me through its work placement program. Not only did I build the skills required for my career, but I also broadened my network in the community service field through my Field Placement and by working on campus. Thanks to George Brown College for the faculty and staff's enthusiasm, the curriculum efficiency, and the job opportunities."

Yumin Gwak

Graduate 2014, Community Worker
Student Success Team
George Brown College, School of ESL

Early Childhood Development students work alongside childcare experts in one of nine of the College's own daycare centres. Many of our Hospitality students do their externships in global hotel chains located just blocks from the College. Co-Operative Education (co-op) is an important component of many of the programs in our Centre for Business, where students spend at least one full-time, four-month paid or unpaid work term in a job related to their field of study.

Co-ops, externships, internships, field education and practicums – all of these ultimately mean one thing: gaining valuable work experience as part of your program.

CO-OP WORK PERMIT International students who are undertaking any kind of field education (co-op, externship, practicum, clinical, etc.), regardless of length, must have a valid co-op work permit. You can submit this application at the same time as your study permit application.

For more information, please visit CIC's website at: cic.gc.ca/english/study/work.asp



"Pursuing postgraduate education at George Brown College has given a massive boost to my career. The faculty is excellent, and they bring vast knowledge and experience to the table. Their application-based approach makes George Brown stand out from the rest. For my co-op, I worked at a multinational firm, and I landed my dream job at the same firm just three weeks after graduating. Thank you, George Brown College, for making it possible."

Satvir Dhillon

Graduate 2011, Strategic Relationship Marketing
Graduate 2012, Marketing Management – Financial Services,
Business Analyst, CIBC

"I wanted to thank you for sending such great candidates to our attention. The top two people interviewed for our IT Analyst position were from George Brown."

Catherine Commins

General Manager
Advanced Chemistry Development Inc.

SOME OF OUR INDUSTRY PARTNERS

BMO (Bank of Montreal)
Canadian Breast Cancer Foundation
Canadian Broadcasting Corporation
Canadian Cancer Society
Canada Goose
CFL (Canadian Football League)
CIBC (Canadian Imperial Bank of Commerce)
Cisco Systems
City of Toronto
Corus Entertainment
Deloitte and Touche
EllisDon
Fairmont Hotels
Government of Ontario
Holt Renfrew
Hudson's Bay
IBM Canada
Joey Restaurants
KPMG
Maple Leaf Sports & Entertainment
Mount Sinai Hospital
NBA
Oliver & Bonacini Restaurants
Randstad
Porter Airlines
RBC (Royal Bank of Canada)
Ritz Carlton Toronto
Rogers Media
Scotiabank
SunLife Financial
Sporting Life
TD Bank Financial Group
Telus
Toronto Blue Jays
Toronto District School Board
Toronto International Film Festival
Tridel/Deltera
Ubisoft
Weston Foods
Xerox

"[George Brown] provides an excellent balance between the practical and the academic skills required for a successful career in hotel and hospitality management."

Fred Lawlor

George Brown graduate
VP Procurement
Fairmont Raffles Hotels International Inc.

WORKING IN CANADA

WORKING DURING YOUR STUDIES As a George Brown student, you may be eligible to work both on- or off-campus. To qualify, you must have a valid Study Permit and be registered full-time in a certificate, diploma or degree granting program of at least six months in duration. You can work up to 20 hours per week during regular academic sessions and full-time during scheduled breaks. You do not need a work permit; however you must have a Social Insurance Number that you can apply for after you arrive in Canada.

WORKING AFTER YOU GRADUATE You are also permitted to work and earn income for up to 3 years in Canada after graduation. You will need to apply for a Post-Graduation Work Permit to do so. Toronto offers one of the most vibrant and diverse employment markets in Canada for you to add North American employment experience to your resume.

For more information, please visit CIC's website at: cic.gc.ca/english/study/work.asp

CAREER SERVICES Gaining the necessary skills and knowledge is key to getting the job — but is not enough by itself. That's where George Brown's Career Services department comes in, with free services to help you sharpen your job-hunting skills. From career workshops to an online job board (gbcareers.georgebrown.ca) to individual consultations with an advisor, Career Services is here to help you succeed. For more information, visit georgebrown.ca/careerservices



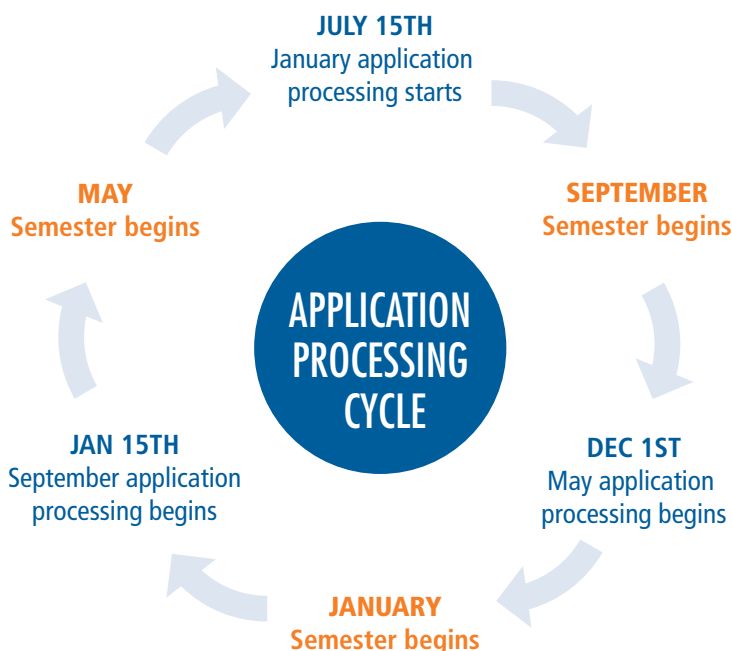


HOW TO APPLY

WHEN TO APPLY

Most programs begin in September and/or January. Most programs fill quickly, so we strongly recommend that you apply at least **six months in advance**. Applications received closer to the start date, however, will be considered if there is space available in the program.

November 15, 2014: Programs for September 2015, January 2016 and May 2016 intakes open in online application.



ADMISSION REQUIREMENTS

In order to be admitted into the program (Diploma/Certificate/Postgraduate/Degree) of your choice you must:

- Have graduated from senior secondary school or equivalent (those applying for a postgraduate program must have graduated from a university or college).
- Be 18 years of age or older at the time of registration
- Pay the non-refundable \$65 application fee
- Provide proof of English proficiency, if English is not the first language in your country. Please see your options for providing proof of English proficiency on page 16.

Apply online at
applynow.georgebrown.ca

If your application is successful you will receive a "Letter of Acceptance" from the College

Once you receive your Letter of Acceptance you must apply for a Study Permit (visa) and Co-op Work Permit (if applicable) or ensure that your existing Permit(s) are valid. George Brown's DLI (Designated Learning Institution) number that you will need to include on your Study Permit application is **019283850612** [Please note that the first character is a capital letter O and not a zero.]

Sign and return your Program Confirmation Form with payment to your Admissions Officer at George Brown International

Based on the registration start date for your program, register for your program and complete course selection at stuvview.georgebrown.ca

Please see the step-by-step guide to our online application on pages 18-19. For more detailed information on the application procedure, please visit our website.



OPTIONS FOR PROVIDING PROOF OF ENGLISH PROFICIENCY

	DIPLOMA/CERTIFICATE	POSTGRADUATE	DEGREE PROGRAM
IELTS (Academic)	6.0, minimum 5.5 in each skill band	6.5, minimum 6.0 in each skill band	6.5, minimum 6.0 in each skill band
TOEFL	80 (Internet-based) minimum 20 in each skill band (550 Paper-based)	84 (Internet-based) minimum 21 in each skill band (570 Paper-based)	92 (Internet-based) minimum 22 in each skill band (580 Paper-based)
George Brown English for Academic Purposes (EAP) Program	Level 8	Level 8 (non co-op programs) Level 9 (co-op programs)	Level 9*
George Brown Admissions Test (only offered in Toronto)	YES	YES	N/A

*Not applicable to collaborative degree programs eg. Early Childhood Education (C118).

You may also be able to meet our English proficiency requirements by completing the appropriate ESL level at one of our language school partners. For more information, please see <http://www.georgebrown.ca/international/partnerships/>

SUPPORTING DOCUMENTS REQUIRED FOR POST-SECONDARY PROGRAMS

- Translated and notarized diploma/transcripts of senior secondary school and/or other level of post-secondary education completed
- Proof of English proficiency, if applicable to you, such as TOEFL or IELTS
- Portfolios and/or interview for some programs, such as Graphic Design, Fashion Design, and Early Childhood Education
- Copy of passport page containing photo and personal information

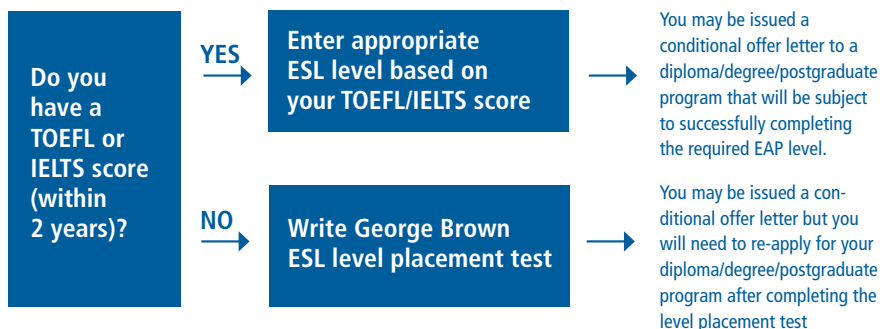
STUDY PERMITS/TEMPORARY RESIDENT VISA/WORK PERMITS

If you want to study in Canada for more than 6 months you must apply for a Study Permit. Study Permits are not issued from within Canada. You must apply to Citizenship and Immigration Canada (CIC) which is located in your nearest Canadian Embassy, High Commission or Consulate. Official information on requirements can be obtained from a CIC office in Canada, a Canadian Embassy or Consulate overseas or from the CIC website at cic.gc.ca. A Temporary Resident Visa (Visitor Visa) is sufficient if you want to study for 6 months or less.

If your program has a co-op/field/clinical placement required, please apply for your Co-op Work Permit along with your Study Permit application.

CONDITIONAL ADMISSION THROUGH GEORGE BROWN'S EAP PROGRAM

Applicants from eligible countries who do not meet George Brown's English language requirements may be offered conditional admission to a post-secondary program through George Brown's EAP (English for Academic Purposes) program.



In all cases final admission will be subject to diploma/degree/postgraduate program availability at the time of completion of EAP requirements.

EAP LEVEL PLACEMENT

Applicants who have written the TOEFL or IELTS tests (Academic) can enter directly into an EAP level based on their test score (within two years). Students who have not written either test will need to write a placement test the week before the program starts to determine their starting level.

EAP STARTING LEVEL*	IELTS: ENTRY requirements		TOEFL: ENTRY requirements		
	Overall	Writing & Speaking	Overall	Speaking	Writing
9	6	6.5	80-91	22	22
8	5.5	6	62-79	20	20
7	5.5	5.5	50-61	18	18
6	5.0	5	40-49	15	14
5	4.0-4.5	4.5	31-39	13	12
4	3.5	4	26-30	11	8
3	3	3.5	19-25	8	6
2	2.5	3	10-18	5	4
1	2.5	2.5	0-9	2.5	2.5

The information in the table above is subject to periodic review. Please check our website for the most up-to-date version. georgebrown.ca/international/futurestudents/applynow

*You will be placed in the EAP starting level that corresponds to your lowest score.



EAP DATES

ACADEMIC YEAR: 2014/15

Placement Test	Start Date	End Date
Aug. 26, 2014	Sept. 2, 2014	Oct. 24, 2014
Oct. 21, 2014	Oct. 27, 2014	Dec. 19, 2014
Dec. 23, 2014	Jan. 6, 2015	Feb. 27, 2015
Feb. 24, 2015	Mar. 2, 2015	Apr. 24, 2015
Apr. 28, 2015	May 4, 2015	June 26, 2015
June 23, 2015	June 29, 2015	Aug. 21, 2015

ACADEMIC YEAR: 2015/16

Placement Test	Start Date	End Date
Aug. 25, 2015	Sept. 8, 2015	Oct. 30, 2015
Oct. 27, 2015	Nov. 2, 2015	Dec. 18, 2015
Jan. 5, 2016	Jan. 11, 2016	Mar. 4, 2016
Mar. 1, 2016	Mar. 7, 2016	Apr. 29, 2016
May 3, 2016	May 9, 2016	July 1, 2016
June 28, 2016	July 4, 2016	Aug. 26, 2016

ONLINE APPLICATION: GUIDE FOR INTERNATIONAL APPLICANTS

GETTING STARTED

Make sure your computer is connected to the internet and you are using a compatible browser. Internet Explorer 8 (or later), Firefox, Safari or Chrome will work.

Go to <https://applynow.georgebrown.ca> to begin.

Create an account:

- » Select the Register to Create a New Application button to begin.
- » Enter the email address you wish to use.
- » Create a password.
- » Enter your name as it appears on your passport.
- » Tell us where you heard about George Brown College.
- » Select the Create Account button **Create Account** to continue.

A registration email will be sent to your email address. Open the email and select the link in it.

The screenshot shows two main sections: 'STUDENTS' and 'AGENTS'. Under 'STUDENTS', there is a 'LOGIN to Complete or Review My Application' button and a 'REGISTER to Create a New Application' button. Below these is a link to 'View Admission Requirements'. Under 'AGENTS', there is a 'LOGIN to Submit Applications on Behalf of Students' button and a link to 'Apply to Become an Authorized Agent'.

The 'Create Account' form includes fields for 'Email Address', 'Password', and 'Password (again)'. There are password requirements: 'has uppercase', 'has lowercase', 'has number', 'length 8 or more', and 'passwords match'. Below these are fields for 'NAME AS IT APPEARS ON YOUR PASSPORT', split into 'First name (Given name)' and 'Last name (Family name)'. At the bottom, there is a question: 'Where did you hear about George Brown College? Please indicate all of the ways you have heard about George Brown College:' with a radio button for 'George Brown College website'.

STEP 1: PERSONAL INFORMATION

- » Enter your personal information in the proper fields.
- » Items marked with an asterisk * are required.
- » Make sure that you enter your complete name as it appears on your passport.

The 'Personal Information' form includes a 'Citizenship' section with a dropdown for 'Country of Citizenship'. Below this is the 'Personal Information' section with dropdowns for 'Gender' and 'Title'. At the bottom, there is a section for 'NAME AS IT APPEARS ON YOUR PASSPORT'.

STEP 2: AGENT/SOURCE INFORMATION

- » Select whether or not you are applying through an agent. If yes, fill in your agent's information.
- » Select whether or not you have applied to George Brown before. If yes, enter your George Brown ID.
- » Select whether or not you're transferring from another Canadian school. If yes, select the school.

The 'Agent Information' form includes a dropdown for 'Are you applying through an educational agent?'. Below this is the 'Previous Postsecondary Application' section with dropdowns for 'Have you applied to George Brown College before?' and 'Are you transferring to George Brown College from another Canadian School?'. At the bottom, there are buttons for 'Return to previous step' and 'Save and go to next step'.

STEP 3: ENGLISH/ESL REQUIREMENT

Here you will see the options you have for providing George Brown with proof of English proficiency.

- » Select the option that applies to you*.
- » If you wish to take English for Academic Purposes (EAP), please consult the instructions that follow.
- » Otherwise, continue to Step 4.

* Please note that the "not applicable" option is only for students who have completed two years of study in which the language of instruction was English, in one of the approved countries listed.

The 'English Proficiency' form includes a section for 'Provide proof of English proficiency, if English is not the official first language in your country.' with several radio button options. The first option is selected: 'I will submit TOEFL or IELTS scores as proof of English for the post-secondary program'. Below this is a section for 'I will submit TOEFL or IELTS scores as proof of English for the post-secondary program' with instructions to upload test scores. At the bottom, there are buttons for 'Return to previous step' and 'Save and go to next step'. The footer includes a copyright notice for 2013 George Brown College and a note about the best viewed browser (Firefox, IE 8.0+, Safari, or Chrome).

English for Academic Purposes.

- » Select whether you are applying for the EAP program **only**, or whether you are applying to EAP **and** a post-secondary program.
- » If you are submitting a TOEFL or IELTS score to be used to determine which level of EAP you will begin at, select "Yes" from the drop-down menu. If you are NOT submitting an IELTS or TOEFL result, select "No".
- » Select how many weeks you will need to study for. Each level is 8 weeks long. Also select the date you wish to begin your EAP study.

English Proficiency

*Provide proof of English proficiency, if English is not the official first language in your country.

☐ I will submit TOEFL or IELTS scores as proof of English for the post-secondary program

☒ I will attend ESL training through George Brown College's English for Academic Purposes (EAP) program

☐ I am currently a GBC ESL student and will be completing the GBC English for Academic Purposes (EAP) program, Level 8 or 9

☐ I will provide a letter or certificate from George Brown College or a Private Language School affiliate

☐ I will take George Brown College's Admission Test (only offered in Toronto)

☐ Not applicable

English for Academic Purposes (EAP) program

*ESL Option

☒ I am applying for the EAP program and I will also be applying for a postsecondary program

☐ I am applying for the EAP program **only** and not for a post-secondary program

*Instead of taking the EAP level placement test, I already have TOEFL or IELTS scores to help determine my length of study in the EAP Program: No

*Select estimated duration you will need

☐ 8 Weeks ☐ 16 Weeks ☒ 24 Weeks ☐ 32 Weeks ☐ 40 Weeks ☐ 48 Weeks ☐ 56 Weeks ☐ 64 Weeks ☐ 72 Weeks

*EAP Start Date: Oct 27, 2014

STEP 4: PROGRAM CHOICE

- » Select the program and term you wish to apply for.
- » You can select a 2nd choice which you will be considered for if you are not accepted to your 1st choice.

Program Choice

Maximum of 2 program applications per intake permitted.

1st choice

Program Code	Program Name	Term	Duration	Campus
A102	Pre-Health Science Program			

STEP 5: UPLOAD YOUR DOCUMENTS

- » Upload the required documents by selecting the Upload File button [Upload file](#) for each document.
- » If you are submitting a TOEFL or IELTS Academic test result, upload it here.

Upload Secondary and/or Post-secondary School Transcripts (File names must be in English only with No special characters)

Translated and notarized transcripts from secondary/post-secondary school | Status: Not uploaded | [Upload file](#)

Upload Secondary and/or Post-secondary School Diploma (File names must be in English only with No special characters)

Translated and notarized secondary/post-secondary school diploma | Status: Not uploaded | [Upload file](#)

STEP 6: APPLICATION FEE

Online payment by credit card is the fastest and most convenient option – Visa, MasterCard, Amex are accepted.

- » Select the method you wish to use to pay your \$65 application fee.
- » If paying by credit card, enter the required information and select the Process Transaction button.
- » If paying by Bank Transfer, upload the receipt. If you have a voucher, upload it here.

Pay the non-refundable CAD\$65 application fee

Choose from one of the payment methods below.

Note: Online payment by credit card is the fastest and most convenient option.

☒ Credit Card

☐ Bank Wire Transfer

☐ I have a voucher

Please complete the following details exactly as they appear on your credit card. Do not put spaces or hyphens in the credit card number.

Cardholder Name:

Credit Card Number:

Expiry Date: 08 / 2014

Card Security Code:

VERIFIED by VISA™

MasterCard SecureCode

Click 'Process Transaction' to charge your credit card. Only click the button once. Using the 'Back/Refresh' or 'Cancel' button after you press the 'Process Transaction' button will not stop the transaction from being processed and may result in a double charge.

[Process Transaction](#) [Cancel Transaction](#)

STEP 7: REVIEW AND SUBMIT

- » Review your program selection at this step before submitting your application.
- » If you wish to view/print and review your complete application before submitting it, select the link below the program selection summary.
- » You must read and accept the agreement before you are able to submit your application.

Program Selection Summary

	Program Code	Program Name	Start Date	Duration
English	EAP	George Brown EAP Program	Oct 27, 2014	24 weeks
1 st Choice	A102	Pre-Health Science Program	May, 2015	1 year (2 semesters)

[View/Print Full Application](#)

Agreement

I certify that the information provided in this application is true and complete. I understand that any false or incomplete information submitted in support of my application may invalidate my application and result in the withdrawal by George Brown College of an offered seat at any time during my enrolment.

I understand that if I am required to undertake a field or work placement, externship, co-op, clinical placement, or practicum within the first or second semesters of study, it is my sole responsibility to apply for a co-op work permit along with my study permit application to ensure that I can begin my academic work placement as scheduled. Please refer to www.cic.gc.ca for more details on all immigration documents.

George Brown College Admissions Officers reserve the right to request original documents if there are any doubts or questions with regard to authenticity or legibility of submitted electronic documents.

☐ I have read, and agree to above statement.

[Return to previous step](#) [Submit Application](#)

STEP 8: CHECK YOUR STATUS

You can return to your application in the future to check on the status. Log in using your email and password.

TUITION FEES AND RELATED COSTS (2015-16)

FEES (IN CANADIAN CURRENCY)

APPLICATION FEE	\$65
-----------------	------

BASE TUITION

English for Academic Purposes Program Not including additional fees for materials, student ID, Student Association, etc. which are approximately \$200 per session.	\$2,688	per 8 week session
Diploma/Certificate/Postgraduate Program	\$12,880	for 2 semesters
Degree Program	\$16,500	for 2 semesters

- Tuition fees do not include incidental fees for student ID, Student Association, alumni fee, technology fee, etc.
The approximate average incidentals fee is \$1,000 per academic year.

- The average for post-secondary materials fees cost is approximately \$200, but some programs have higher materials fees.
Some specialized programs have higher tuition fees which will be specified on official College invoices.

OTHER PROGRAM RELATED FEES

Fee for co-op work term, if applicable	\$450	for 1 semester
Mandatory Health Insurance – post-secondary Students starting or returning in the September semester, will be charged and covered for one full year, irrespective of the duration of their program.	\$642.02	for one year coverage (Sept.–Aug.)
	\$466.25	for 8 months coverage (Jan.–Aug.)
	\$253.91	for 4 months coverage (May–Aug.)
Health Insurance for English for Academic Purposes Program	\$124.90	per 8 week session

OTHER POTENTIAL COSTS

Homestay Accommodation

Homestay Placement Fee	\$165	one time payment, non-refundable
2 meals per day (breakfast and dinner)	\$725	per 4 weeks
3 meals per day (breakfast, lunch and dinner)	\$775	per 4 weeks
Extra cost for internet access	\$50	per 4 weeks

Other Accommodation

Toronto has a large housing and rental market that offers numerous accommodation options for students. See the GBC website for further information: georgebrown.ca/international
The College does not arrange non-homestay accommodation for students.

Estimated costs for privately arranged accommodation may range from \$500–\$1,200 per month, depending on individual living situation (e.g., downtown or suburb; shared or not)

Airport Pick-up (optional, for homestay applicants only)	\$85	
Public Transportation	\$1,350	estimated per year
Books and Supplies (post-secondary programs)	\$1,000 – \$1,200	estimated per year

All fees are subject to change, without notice. The College International Withdrawal Policy applies; see College website for details georgebrown.ca/international/currentstudents/withdrawal_refund_policy.aspx

INTERNATIONAL STUDENT SCHOLARSHIPS AND BURSARIES

In partnership with Scotiabank, George Brown College is pleased to provide merit-based entry scholarships for international students from designated developing economies. Four awards of \$5,000 each will be applied as a second semester tuition fee credit to eligible newly admitted students for George Brown College full-time post-secondary programs (diploma, degree, or graduate certificate). Applicants from the Caribbean, Central & South America, India and China are encouraged to apply. For more information, please see georgebrown.ca/international/futurestudents/scholarships/

The College also provides post-secondary scholarships for returning international students based on academic excellence and community involvement. The Student Association also provides some international student bursaries to students who have exemplified great leadership qualities and are in financial need. For more information, refer to georgebrown.ca/international/currentstudents/scholarships/

PROGRAMS OF STUDY

George Brown College is continually striving to improve its programs and their delivery. The information contained in this guide is subject to change without notice. It should not be viewed as a representation, offer, or warranty. Students are responsible for verifying George Brown College admission, graduation, and fee requirements as well as any requirements of outside institutions, industry associations or other bodies that may award additional designations concurrently with, or after completion of, a George Brown College program.

PROGRAMS LIST			Program Length				Certification				Starting Date				Special admission requirements
Program Code	Program Name	Certification	4 Year	3 Year	2 Year	1 Year	Bachelor's Degree	Diploma	Certificate	Postgraduate Certificate	September	January	May	Field education available	
CENTRE FOR PREPARATORY & LIBERAL STUDIES															
SCHOOL OF ENGLISH AS A SECOND LANGUAGE – DIPLOMA/CERTIFICATE															
R115	English for Academic Purposes Program (EAP)								•		Every 8 weeks				□
SCHOOL OF ENGLISH AS A SECOND LANGUAGE – POSTGRADUATE															
R400	Teaching English as a Second Language (TESL)				•				•		•			•	□
SCHOOL OF LIBERAL ARTS & SCIENCE – DIPLOMA/CERTIFICATE															
R101	General Arts and Science Two-Year				•			•			•	•			
R104	General Arts and Science One-Year				•			•			•	•			
CENTRE FOR ARTS & DESIGN															
SCHOOL OF DESIGN – DIPLOMA/CERTIFICATE															
G102	Graphic Design			•				•			•	•		•	▲ □
G103	Interaction Design and Development			•				•			•	•		•	
G108	Art & Design Foundation				•				•		•	•			
G109	Game Development			•				•			•	•		•	▼ □
SCHOOL OF DESIGN – POSTGRADUATE															
G401	Design Management				•					•	•			•	▲ ▼
G405	Digital Design – Game Design				◊					•	•			•	▲ ▼
G412	Interactive Media Management				◊					•	•	•		•	▲ ▼ □
G414	Interdisciplinary Design Strategy				9 months					•	•			•	▲ ▼
SCHOOL OF FASHION STUDIES – DIPLOMA/CERTIFICATE															
F102	Fashion Management				•			•			•	•		•	
F112	Fashion Business Industry				•			•			•				
F113	Fashion Techniques and Design				•			•			•	•			□
F105	Gemmology				•				•		•				
F110	Jewellery Methods				•			•			•				
F111	Jewellery Essentials				•			•			•				
F114	Jewellery Arts		•					•			•				◀ ◊ ◊ ▶
SCHOOL OF FASHION STUDIES – POSTGRADUATE															
F402	International Fashion Development & Management				•					•	•			•	▶ □
SCHOOL OF PERFORMING ARTS – DIPLOMA/CERTIFICATE															
P104	Theatre Arts – Performance			•				•			•			•	▼ □
P101	Dance Performance Preparation				•				•		•			•	▼ □
P102	Dance Performance Studies				•			•			•			•	▼ □
P103 <small>NEW</small>	Commercial Dance Studies				•				•			•		•	
R102	General Arts and Science – Introduction to Performing Arts Careers				•				•		•				
CENTRE FOR BUSINESS															
SCHOOL OF ACCOUNTING AND FINANCE – DIPLOMA/CERTIFICATE															
A146	Pre-Business				•				•		•	•			
B103	Business – Accounting				•			•			•	•			
B107	Business Administration – Accounting (no co-op)			•				•			•	•		•	
B130	Business Administration – Finance (no co-op)			•				•			•	•		•	
B150	Business Administration – Finance (co-op)			•				•			•	•		•	
B157	Business Administration – Accounting (co-op)			•				•			•	•		•	
SCHOOL OF ACCOUNTING AND FINANCE – DEGREE															
B301	Bachelor of Applied Business – Financial Services		•				•				•	•		•	
SCHOOL OF ACCOUNTING AND FINANCE – POSTGRADUATE															
B407	Financial Planning				•					•	•	•			
SCHOOL OF HUMAN RESOURCES – DIPLOMA/CERTIFICATE															
B134	Business – Human Resources				•			•			•	•		•	
B144	Business Administration – Human Resources (no co-op)			•				•			•	•		•	
B154	Business Administration – Human Resources (co-op)			•				•			•	•		•	

◊ 3-SEMESTER PROGRAMS ♦ QUESTIONNAIRE ▲ PORTFOLIO ▼ INTERVIEW ► RESUME ◀ INFORMATION SESSION ■ ADMISSION TEST □ CHECK OUR WEBSITE FOR OTHER REQUIREMENTS

PROGRAMS LIST		Program Length				Certification			Starting Date					Field education available	Special admission requirements
Program Code	Program Name	4 Year	3 Year	2 Year	1 Year	Bachelor's Degree	Diploma	Certificate	Postgraduate Certificate	September	January	May			
CENTRE FOR BUSINESS															
SCHOOL OF HUMAN RESOURCES – POSTGRADUATE															
B408	Human Resources Management				◊				•	•	•	•	•		
SCHOOL OF MANAGEMENT – DIPLOMA/CERTIFICATE															
B121	Business Administration – Supply chain (no co-op)		•				•			•	•		•		
B123 NEW	Business Administration – Retail (no co-op)		•				•			•	•		•		
B125 NEW	Business			•			•			•	•				
B126	Business Administration – Project Management (no co-op)		•				•			•	•		•		
B131	Business Administration – International Business (no co-op)		•				•			•	•		•		
B145	Business Administration (no co-op)		•				•			•	•		•		
B151	Business Administration – Supply chain (co-op)		•				•			•	•		•		
B155	Business Administration (co-op)		•				•			•	•		•		
B156	Business Administration – Project Management (co-op)		•				•			•	•		•		
B161	Business Administration – International Business (co-op)		•				•			•	•		•		
B163 NEW	Business Administration – Retail (co-op)		•				•			•	•		•		
SCHOOL OF MANAGEMENT – POSTGRADUATE															
B410	Small Business Entrepreneurship				•				•	•	•				
B411	International Business Management				•				•	•	•	•			
B412	Analytics for Business Decision Making				•				•	•	•		•		
B415 NEW	Project Management				•				•	•	•		•		
SCHOOL OF MARKETING – DIPLOMA/CERTIFICATE															
B108	Business Administration – Marketing (no co-op)		•				•			•	•		•		
B120	Business – Marketing			•			•			•	•		•		
B158	Business Administration – Marketing (co-op)		•				•			•	•		•		
SCHOOL OF MARKETING – POSTGRADUATE															
B400	Sport and Event Marketing				◊				•	•	•	•	•		
B406	Marketing Management – Financial Services				◊				•	•	•		•		
B409	Strategic Relationship Marketing				◊				•	•	•		•		
B413	Digital Media Marketing				◊				•	•	•		•		
CENTRE FOR COMMUNITY SERVICES AND EARLY CHILDHOOD															
SCHOOL OF DEAF AND DEAF-BLIND STUDIES – DIPLOMA/CERTIFICATE															
C108	Intervenor for Deaf – Blind Persons			•			•			•			•	◀◀◀◀	
C110	American Sign Language English Interpreter		•				•			•			•	◀◀◀◀◀◀	
C114	American Sign Language and Deaf Studies				•			•		•				◻	
SCHOOL OF EARLY CHILDHOOD – DIPLOMA/CERTIFICATE															
C100	Early Childhood Education			•			•			•	•		•	◀◀	
C105	Early Childhood Assistant				•			•		•			•	◀◀	
SCHOOL OF EARLY CHILDHOOD – DEGREE															
C118	Bachelor's Degree – Early Childhood Education	•				•				•			•	◀◀◀◀	
C300	Bachelor of Applied Arts – Early Childhood Leadership	•				•				•			•	◀◀◀◀	
SCHOOL OF SOCIAL & COMMUNITY SERVICES – DIPLOMA/CERTIFICATE															
A103	Pre-Community Services				•			•		•	•				
C101	Community Worker			•			•			•			•		
C109	Career and Work Counsellor			•			•			•			•	◀◀◀◀	
C119	Social Service Worker			•			•			•			•	◻	
C134	Child and Youth Worker (Fast-Track)			•			•				•		•	◻	
C135	Social Service Worker (Fast-track)				◊		•					•	•	◻	
C136	Behavioural Science Technology (Intensive)				◊		•			•			•		
C138	Career and Work Counsellor (Fast-Track)				◊		•				•			◀◀◀◀◀◀	
R107	Assaulted Women's and Children's Counsellor/Advocate			•			•			•			•	◀◀◀◀	
SCHOOL OF SOCIAL & COMMUNITY SERVICES – POSTGRADUATE															
C405	Autism & Behavioural Science				•				•	•			•	◻	
CENTRE FOR CONSTRUCTION AND ENGINEERING TECHNOLOGIES															
SCHOOL OF ARCHITECTURAL STUDIES – DIPLOMA/CERTIFICATE															
T109	Architectural Technology		•				•			•	•		•		
T132	Architectural Technician			•			•			•	•				
T170	Interior Design Technology		•				•			•	•				
ANGELO DEL ZOTTO SCHOOL OF CONSTRUCTION MANAGEMENT – DEGREE															
T312	Bachelor of Technology – Construction Management	•				•				•			•		

◇ 3-SEMESTER PROGRAMS • QUESTIONNAIRE ▲ PORTFOLIO ▼ INTERVIEW ► RESUME ◀ INFORMATION SESSION ■ ADMISSION TEST ◻ CHECK OUR WEBSITE FOR OTHER REQUIREMENTS

PROGRAMS LIST		Program Length				Certification			Starting Date					Field education available	Special admission requirements
Program Code	Program Name	4 Year	3 Year	2 Year	1 Year	Bachelor's Degree	Diploma	Certificate	Postgraduate Certificate	September	January	May			
CENTRE FOR CONSTRUCTION AND ENGINEERING TECHNOLOGIES															
ANGELO DEL ZOTTO SCHOOL OF CONSTRUCTION MANAGEMENT – DIPLOMA/CERTIFICATE															
T105	Construction Engineering Technology		•				•			•	•				
T161	Construction Engineering Technician			•			•			•	•				
T164	Civil Engineering Technology		•				•			•	•				
ANGELO DEL ZOTTO SCHOOL OF CONSTRUCTION MANAGEMENT – POSTGRADUATE															
T403	Construction Mgt. for Internationally Educated Professionals				◊				•		•		•	▶▼	
SCHOOL OF APPRENTICESHIP AND SKILLED TRADES – DIPLOMA/CERTIFICATE															
T110	Building Renovation Technician			•			•			•	•		•		
T126	Construction Trades Techniques				◊			•		•	•	•			
T148	Building Renovation Technology		•				•			•	•		•		
T160	Heating, Refrigeration and Air Conditioning Technician			•			•			•	•				
T162	Heating, Refrigeration and Air Conditioning Technology		•				•			•	•				
T165	Plumbing Techniques				•			•				•			
T167	Electrical Techniques				•			•				•			
SCHOOL OF COMPUTER TECHNOLOGY – DIPLOMA/CERTIFICATE															
T127	Computer Programmer Analyst		•				•			•	•		•		
T141	Computer Systems Technician			•			•			•	•				
T147	Computer Systems Technology		•				•			•	•		•		
T163	Game Programming		•				•			•	•				
SCHOOL OF COMPUTER TECHNOLOGY – POSTGRADUATE															
T402	Health Informatics				◊				•		•		•	□	
T405	Information Systems Business Analysis				◊				•	•	•		•	□	
T411	Wireless Networking				◊				•	•	•		•	□	
T413	Network and System Security Analysis				◊				•	•	•				
SCHOOL OF MECHANICAL AND ENGINEERING TECHNOLOGIES – DIPLOMA/CERTIFICATE															
T121	Mechanical Engineering Technology-Design		•				•			•	•				
T146	Electro-Mechanical Engineering Technician			•			•			•	•				
T149	Mechanical Techniques				14 weeks			•				•			
T171	Electromechanical Engineering Technology – Building Automation		•				•			•	•			□	
T173	Mechanical Technician – CNC and Precision Machining			•			•			•	•				
CENTRE FOR HEALTH SCIENCES – DIPLOMA/CERTIFICATE															
A102	Pre-Health Science				•			•		•	•	•			
C102	Activation Co-ordinator/Gerontology			•			•			•			•	□	
C115	Office Administration – Medical			•			•				•		•		
C139	Health Information Management			•			•			•			•		
S113	Dental Assisting Program Levels I and II				•			•		•			•		
S115	Dental Office Administration				•			•		•			•		
S117	Hearing Instrument Specialist		•				•			•			•		
S125	Fitness and Health Promotion			•			•			•			•	□	
CENTRE FOR HOSPITALITY & CULINARY ARTS															
CHEF SCHOOL – DIPLOMA/CERTIFICATE															
H100	Culinary Management			•			•			•	•	•	•		
H108	Baking Pre-Employment				•			•			•				
H112	Culinary Skills – Chef Training				•			•		•	•	•			
H113	Baking & Pastry Arts Management			•			•			•			•	□	
H116	Culinary Management (Integrated Learning)			•			•			•	•	•	•		
CHEF SCHOOL - POSTGRADUATE															
H411	Culinary Arts – Italian				◊				•			•	•	▼	
SCHOOL OF HOSPITALITY & TOURISM MANAGEMENT – DIPLOMA/CERTIFICATE															
H101	Hospitality Services (Pre-Hospitality)				•			•		•			•		
H102	Food and Beverage Management			•			•			•	•		•		
H103	Hotel Management			•			•			•	•	•	•		
H110	Hospitality Tourism & Leisure			•			•			•	•		•		
H119	Culinary Management – Nutrition			•			•			•			•		
H121	Special Events Planning			•			•			•	•		•		
SCHOOL OF HOSPITALITY & TOURISM MANAGEMENT – DEGREE															
H301	Bachelor of Applied Business – Hospitality Operations Management	•				•				•			•	□	
SCHOOL OF HOSPITALITY & TOURISM MANAGEMENT – POSTGRADUATE															
H402	Food and Nutrition Management				•				•	•			•	▼□	

How to find us



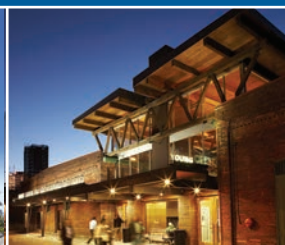
CASA LOMA CAMPUS
146 KENDAL AVE.
• ADVANCED ENGINEERING TECHNOLOGIES
• BUILDING TECHNOLOGIES
• FASHION AND JEWELLERY
• GENERAL ARTS AND SCIENCE
• PERFORMING ARTS



RYERSON UNIVERSITY
99 GERRARD ST. E.
• EARLY CHILDHOOD EDUCATION



ST. JAMES CAMPUS
200 KING ST. E.
• BUSINESS
• CHEF SCHOOL
• COMMUNITY SERVICES
• DESIGN
• HOSPITALITY AND TOURISM
341 KING ST. E.
• ENGLISH FOR ACADEMIC PURPOSES PROGRAM



YOUNG CENTRE FOR THE PERFORMING ARTS
50 TANKHOUSE LANE
• PERFORMING ARTS



WATERFRONT CAMPUS
51 DOCKSIDE DR.
• HEALTH SCIENCES

A member in good standing of:
Association of Canadian Community Colleges



Canadian Bureau for International Education



FOR MORE INFORMATION, CONTACT THE INTERNATIONAL CENTRE
200 King Street East (Main Floor), Toronto, Ontario, Canada M5A 3W8
Phone: 416-415-5000 ext. 2115 Fax: 416-415-2120
Email: international@georgebrown.ca
applynow.georgebrown.ca



facebook.com/georgebrowninternational



georgebrown.ca/international



30% Post-Consumer Waste